



Rokid Air

User Manual

Everything you need to know about Rokid Air

Contents

Setup Guide

Interactions

Applications

Contact Us



Setup Guide

Connectivity/Rokid Air App Setup

Setup Guide

This is to help you get everything ready before using Rokid Air.

Before using the Rokid Air, please to know that the Rokid Air glasses support the following two modes: Projection Mode and AR Mode.



Projection mode

After the glass is connected to mobile devices, the image from your device will be projected on the glasses completely, and the Air will be used as a stand-alone extension display.



AR mode

After the glass is connected to the smart phone, enable the Rokid Air app on the smart phone to enjoy the virtual 3D AR mode.

Connectivity_Projection Mode

Direct connection

The following devices support direct connection with Rokid Air:

- Android phones with USB-C and DP.
- iPad and Android tablets with USB-C and DP.
- Macbook and PC with USB-C and DP.

Via HDMI to Type-C cable

The following devices can be used with Rokid Air via HDMI to Type-C cable:

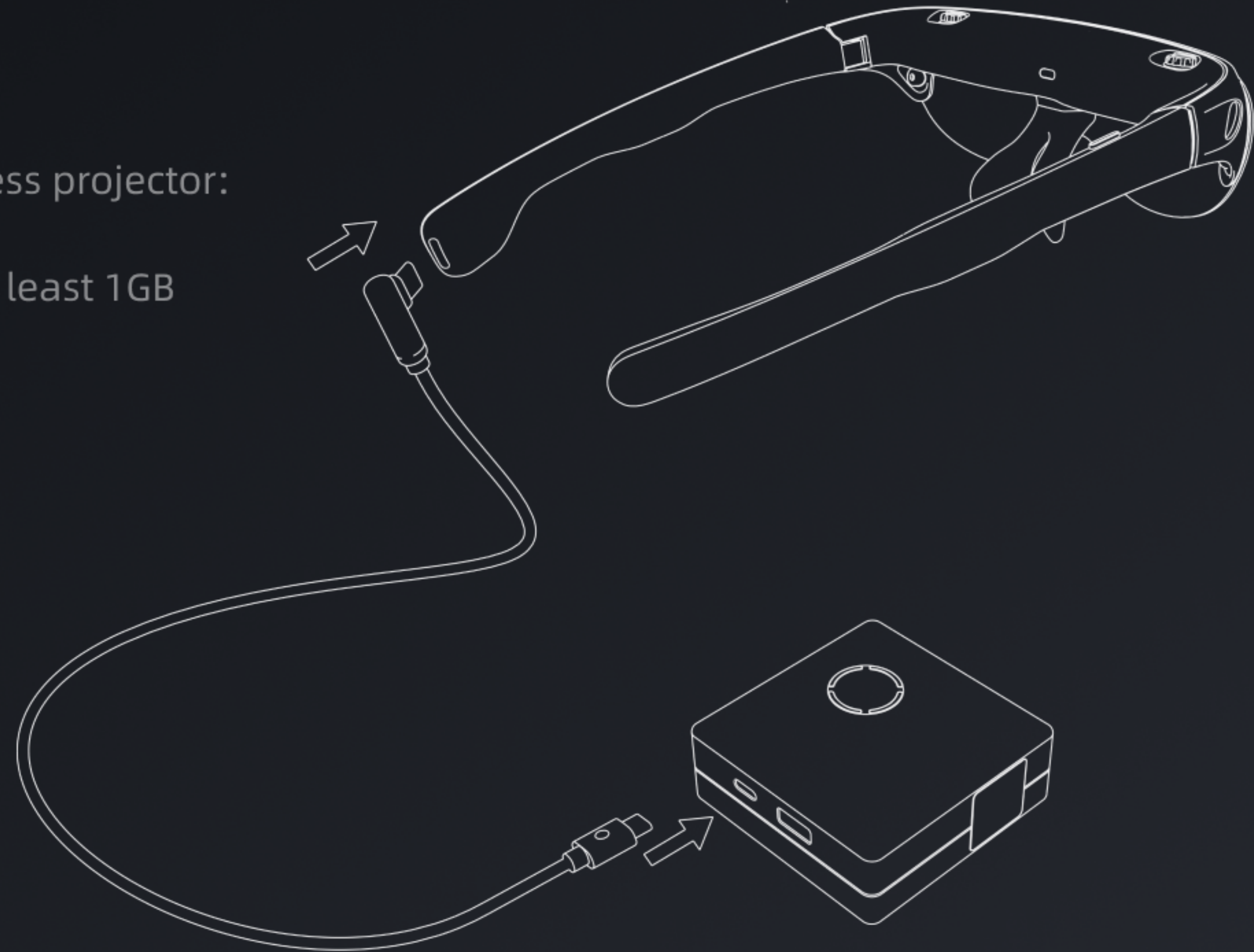
- Game consoles (PS4, Xbox and Switch base) with HDMI port.
- PC with HDMI port.
- Switch host connection with Switch portable base device (*ZMI QB816 is recommended to be used as the switch portable base).

Connectivity_Projection Mode

Via wireless adapter

The following devices can be used with the wireless projector:

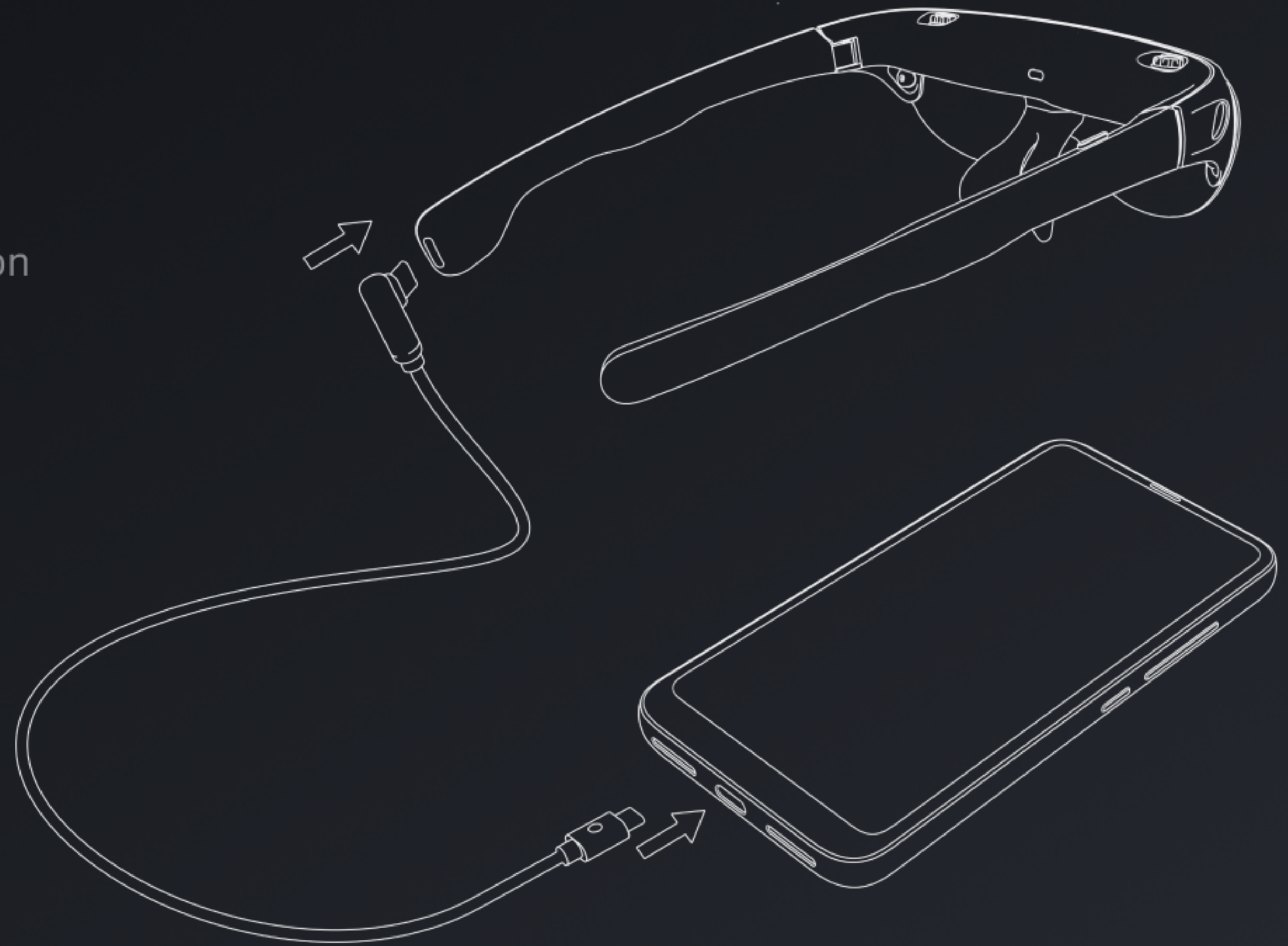
- Android phones (Android 4.2 and later, with at least 1GB of RAM).
- iPhones (iOS 7 and later).



Connectivity_AR Mode

AR Mode

- It's only applicable to Android phones running on Android 10 and later with USB-C, DP and OTG.



Compatible Phones

HUAWEI

Mate 10/10Pro , Mate 20/20Pro/20X , Mate30E/30/30Pro , Mate40/40Pro , Mate X2
P20 , P30Pro , P40Pro , P50/P50Pro

HONOR

V20 , Magic 3/3Pro

OnePlus

7/7T/7Pro , 8/8T/8Pro , 9R/9/9Pro

OPPO

Find X2/X2Pro , Find X3/X3Pro

Compatible Phones

Black Shark

Black Shark3、Black Shark4

SAMSUNG

S10 Qualcomm , S20 FE Qualcomm/S20 Qualcomm/S20+ Qualcomm/S20U Qualcomm ,
S21 Qualcomm/S21U Qualcomm , Note 20 Qualcomm/Note 20U Qualcomm ,
Galaxy Z Fold 3 Qualcomm , W22

Rokid Air App Setup

Guide you to successfully enter AR mode.

Download software

- Rokid Air app can be downloaded from the official website of Rokid Air (air.rokid.com).
- And then the application update will be reminded in the smart phone. Timely update it to ensure the best experience.
- When the application is downloaded, allowing the installation of external source applications shall be selected on the smart phone, and the Rokid Air app will ensure your safety in use.



Scan the QR Code to download and install Rokid Air App

Rokid Air App Setup

Guide you to successfully enter AR mode.

Device guide

Due to system limitations, please complete the corresponding operation instructions before using different devices.



Huawei phones

When the Rokid Air app is installed and used in the Huawei phones, ensure the system has exited from the pure mode, and [Exit] can be selected via Setting>System and Update>"Pure Mode".

Rokid Air App Setup

Guide you to successfully enter AR mode.

Device guide

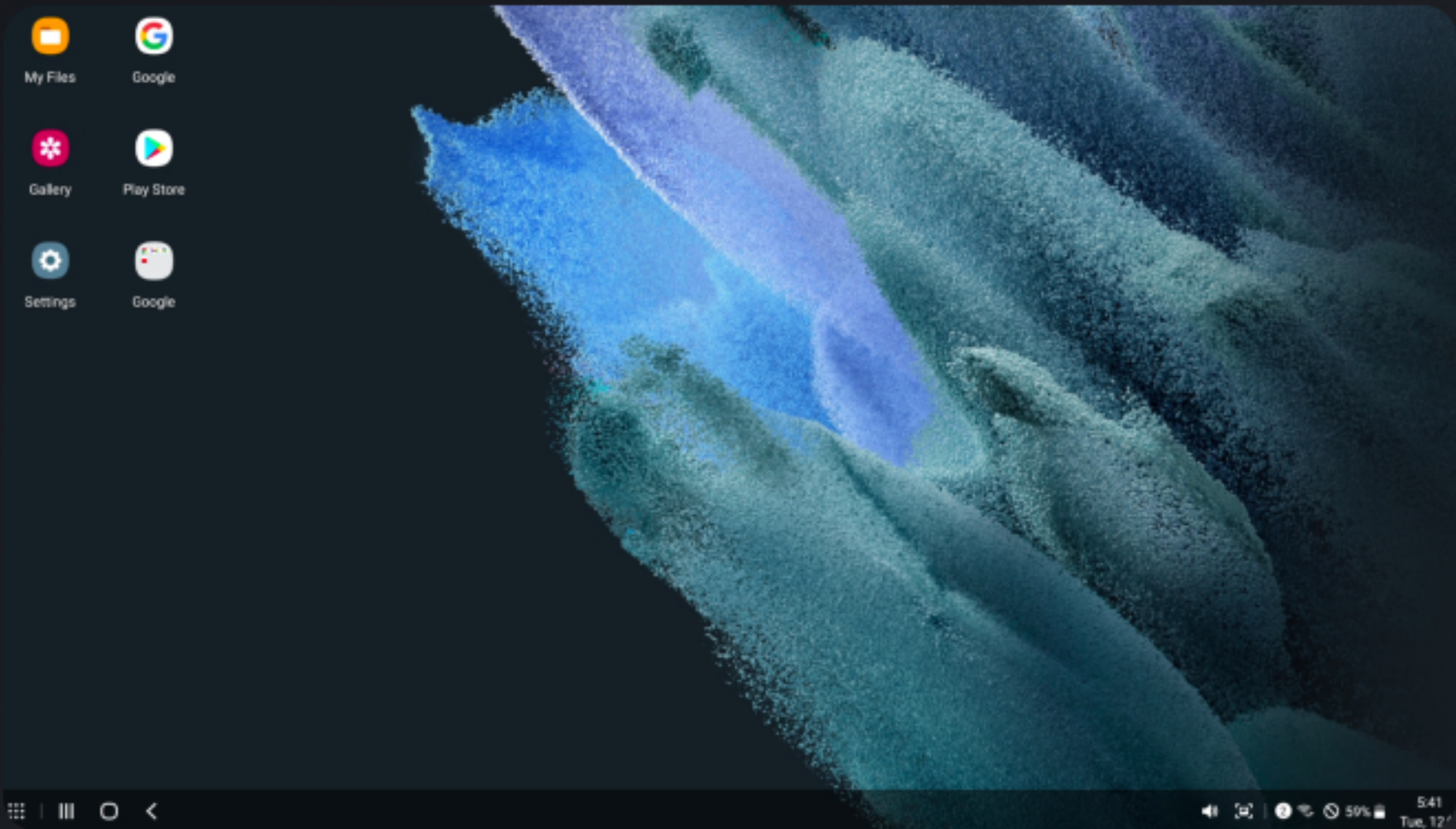
Due to system limitations, please complete the corresponding operation instructions before using different devices.



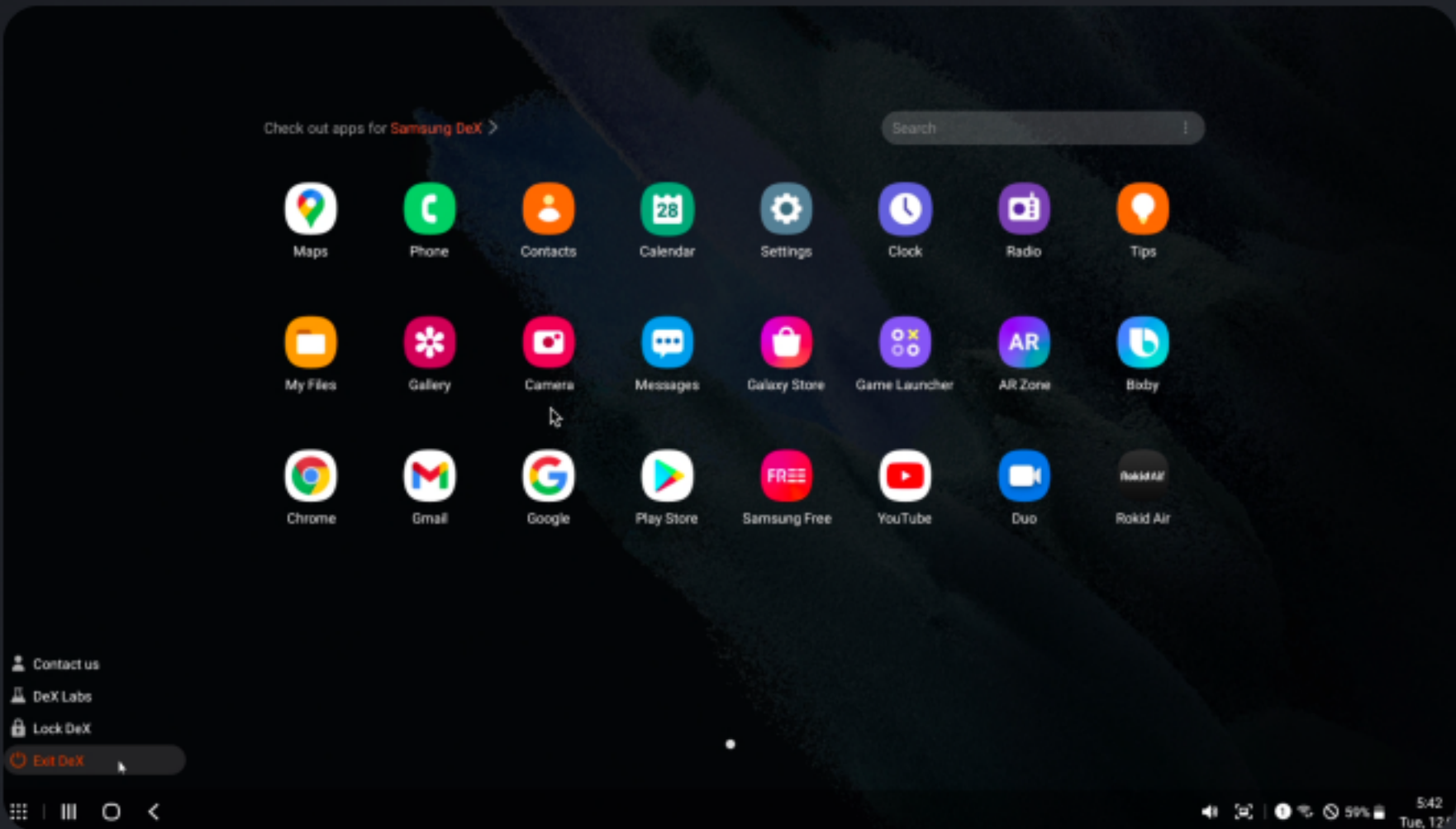
Samsung phones

When the Rokid Air app is installed and used in the Samsung phones, ensure:

The system will enter the Samsung Dex projection screen mode by default when entering the Samsung smart phone for the first time; Move the mouse in the glasses to the lower left corner, and select the [Application Program] icon and [Exit DeX] at the bottom left corner of the page popping up.



DeX Mode



Exit DeX Mode

Rokid Air App Setup

Guide you to successfully enter AR mode.

Application authority

- After the application is enabled, the use of [Take Photos or Record a Video], [Access Device Photos, Media Content and Files] and [Audio Recording] shall be allowed. We will use the above permissions for system projection screen, local player/gallery and offline/online voice services.

Registration

- When use for the first time, you can login after registering the Rokid Air App account, and your account will be associated with a variety of virtual assets in Rokid Air subsequently.

Access authorization

- You will enter the waiting page after having logged in; Connect the device to the Rokid Air at this time, and allow Rokid Air to access the USB device in the system pop-up window; When you see the User Guide in your glasses, you have entered the AR mode of Rokid Air.

Interactions

Touchpad / Controller / Voice Control

Interactions

Touchpad

You could use the default touchpad for operations:

- Control by single finger:
 - Tap with one finger to click.
 - Slide your finger on the screen to control the pointer.
- Control by two fingers:
 - Slide two fingers up or down to scroll the current page.
 - Swipe left or right with two fingers to show the previous or next page.
- Control by three fingers:
 - Swipe down with three fingers to display Launchpad.



Interactions

Touchpad

You could use the default touchpad for operations:

- Home button:
 - Click the Home button will take you back to the launcher at any time
 - Press the Home button long under the 3DoF mode to reset picture orientation.
- Back button:
 - Click the Back button to return to the upper level from current page.



Interactions

Controller

- Your smart phone page will change to the specific controller when entering part of third-party games.
- Home key: Press the key to return from the third-party game to the launcher quickly.
- Start key: It's defined by the third-party application and used as [Confirm]/[Start] function generally.
- Menu key: It's defined by the third-party application and can call out the menu in the game generally.
- Left rocker key: It's defined by the third-party and can control the movement of the operation object in the game generally.



Interactions

Controller

- Right rocker key: It's defined by the third-party and can control visual angle movement in the game generally.
- ABXY key: It's defined by the third-party, Key A is equal to Confirm and Key B is equal to Back button generally.

* Support the connection of physical bluetooth game controller to the smart phone to manipulate Rokid Air (including system pre-installed application and partial third-party applications/games applicable to the handle).



Interactions

Voice Control

- Rokid Air supports the full voice control (needing to be used in the pre-installed application of the system), and you can access all system functions quickly via voice commands.
- Enable the application: Quickly enable the app by saying "Open+ App Name".
- Back to the launcher; Exit from the current application to the launcher by saying "Navigate Home".
- Page operation: Return to the previous menu from current page by saying "Navigate Back"; Control the page by saying "Page Up"/"Page Down".
- Volume control: Control the volume by saying "Volume Up"/"Volume Down"; Control the volume switch by saying "Volume Off"/"Volume On".

Interactions

Voice Control

- Brightness adjustment: Control the display brightness by saying "Brightness Up"/"Brightness Down".
- Local video playing: Realize local video playing control by saying "Play Video" "Pause Video" "Next One" "Previous One" "Fast Forward" and "Rewind".
- Cinema playing: Play the film content in the cinema by saying "Play/Open + Movie Name".
- Screen on/off: Control the screen on/off by saying "Screen On"/"Screen Off".

Applications

User Guide/AR Store/Cinema
Browser/Files/Settings

Applications

The Rokid Air system pre-installed applications cover User Guide, AR Store, Cinema, Browser and Files, and more third-party applications can be downloaded from the AR store.

User Guide

- Automatically enter the [User Guide] when the glasses are used for the first time and enter the launcher after the User guide is completed.
- The [User Guide] cover definition adjustment and touchpad user guidance to help you to understand the basic usage of Rokid Air.
- If you need more instructions, you can view [Definition], [Voice Commands] and [Support] in the setting to understand more content regarding direction for use.
- If you need to skip the [User Guide], you can long press [Back Button] to skip the guidance process.
- Later, you can enable the [User Guide] in the App list to enter the operation guidance again.

Applications

AR Store

- The AR Store will provide you with high-quality AR applications, and you can download/install/update the required high-quality applications here.
- Rokid Air will continuously improve the AR content ecology to create the best AR application platform.
- If you're willing to participate in the evaluation of AR applications not complete yet, you can access [Application Lab] to appreciate and evaluate the applications that are still being explored, understand and participate in the latest application development of AR and provide your valuable advice.

Applications

Cinema

- The cinema provides you with mainstream video site, and you can quickly access commonly used video websites and enjoy the big-screen viewing experience via Rokid Air.
- The on-demand playing of 3D and VR panoramic online video can be carried out via third-party application.
- The local professional player supports a variety of video setting functions and playing of multiple 3D video formats, and is compatible with the 180°and 360° panoramic videos; Quick lookup can be performed under the [Files]-[Video] by importing the required film and television content to the smart phone.

Applications

Browser

- To protect the users' privacy, the browser won't record the users' browsing history and cache content to ensure the security of the browser use.
- Relevant pages can be accessed by inputting the search terms URL in the search bar at the top of the page after enabling the [Browser] application.
- [Forward], [Back], and [Refresh] options are included in the upper part of the menu bar.
- The current webpage content can be included into favorite or added to the App list by clicking [More] option on the right side of the search bar; In case of needing to delete, the website icon can be pressed long for deletion.

Applications

Files

- Allow viewing the picture and video saved in the smart phone.
- 3D and panoramic setting can be conducted by clicking [More] Option in the picture playing.
- In the video playing, 3D and panoramic setting and video settings (such as Playback Speed, Aspect Ratio, Subtitles and Track) can be performed.

Applications

Settings

- In the setting, you can access the general setting, the system information and user help.
- You can carry out basic adjustment of brightness and volume in the setting; If you want to adjust the volume quickly, you can directly adjust the volume of your smart phone, and then the sound effect in Air will be subject to real-time synchronous control.
- The definition adjustment function will provide more detailed myopia adjustment operation guides, and you can wake up the function at any time by voice command [Adjust Definition].
- [Horizontal Screen Mode] can be used to make the default touchpad page on the smart phone held horizontally to help you find a way of holding which you like better.

Applications

Settings

- You can choose whether to turn on/off the system prompt tone and smart phone vibration prompt.
- The amount of blue light entering the eye will be reduced after the [Eye Protection Mode] is enabled; When the Rokid Air is used by the old and children, it's suggested that you should turn on the eye protection mode to protect the safety of your eyes furthest.
- You can query the information on the device used (SN and System Version) in the system information; Terms of Use and Privacy Policy can be read in the Support.

Contact Us

Contact Us

You can contact us via the information below:

- Business Inquiries: air@rokid.com
- Media Inquiries: media@rokid.com
- After-sales service: support-air@rokid.com
- Address: Building 22, Xixiyihao Creative Business Center, No. 808, West Wener Road, West Lake District, Hangzhou, China